

APPENDIX B

Equipment/Materials Within a Permissible Area

The list below is an example of items and is not all inclusive. Each area is required to be evaluated by an PAI using their best judgment on a case-by-case basis.

The following is a partial list of example items that would be allowed within a designated area and still be considered essentially free of combustibles:

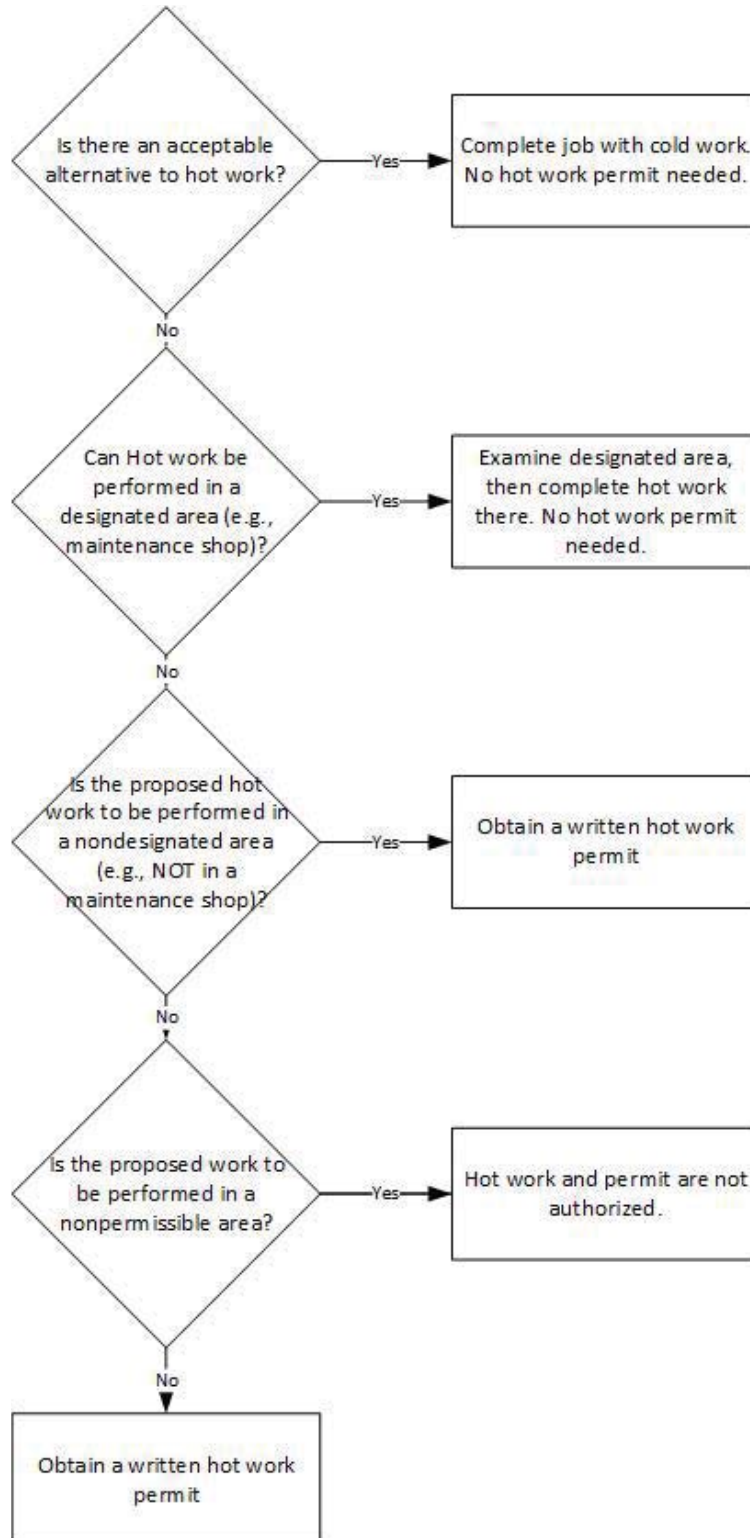
- Gas lines for hot work equipment
- Air hoses for hot work equipment
- Electric cords/cables for hot work equipment
- Non-combustible walls (concrete, gypsum wallboard on metal studs, steel partitions to segregate a welding area) without openings or cracks in the construction for at least a height of 5 feet above the hot work surface
- Non-combustible floor (concrete, earth, steel) without openings or cracks to floor/area below, as applicable
- Heavy timber (greater than a typical 4" x 4") necessary to support material
- Tools (i.e. wire brush, soap stone, MIG pliers, screw drivers, chipping hammer, torpedo level, etc.) necessary to perform hot work
- Fire resistive lumber necessary to support hot work
- Lumber with fire resistive coating necessary to support hot work

The following list below is to provide guidance of what a Permissible Area evaluation considers as combustibles that are prohibited when uncovered or less than 35 feet from hot work within a Permissible Area.

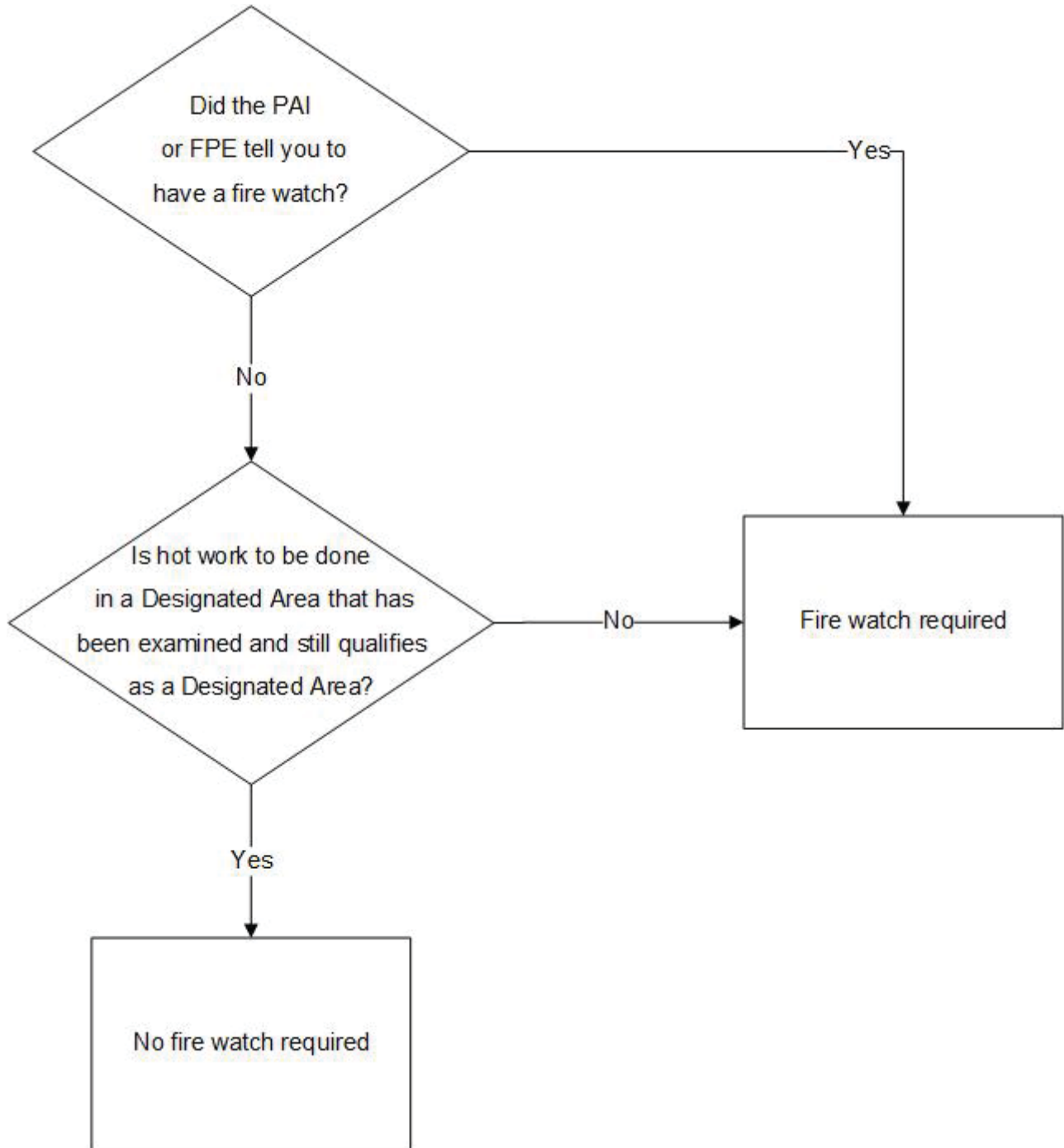
Examples of Combustibles (not all inclusive):

- Cardboard
- Paper
- Shrink-wrap or wind screening material that is not clearly marked or labeled as meeting the listing or approval of a fire retardant cover. Contact FPE or ES&H if you have questions.
- Combustible/Flammable liquids and compressed gases
- Wooden materials not treated with fire retardants
- Plastic products – trash cans, 5 gallon buckets, etc.
- Candlestick stands

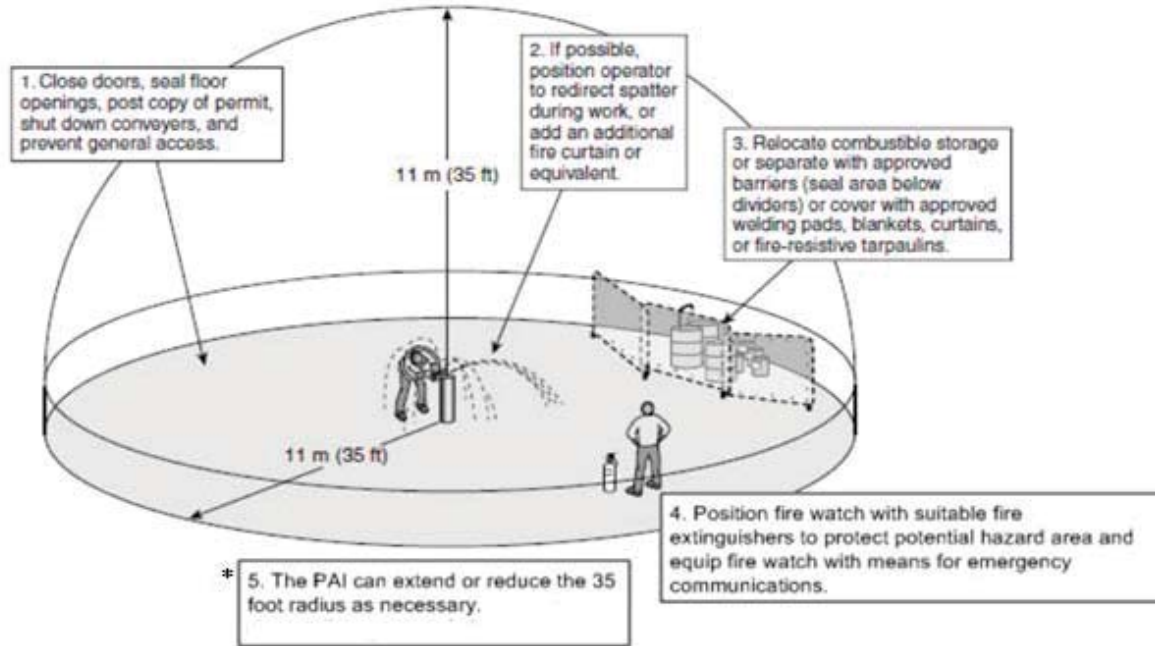
APPENDIX C Hot Work Permit Decision Tree



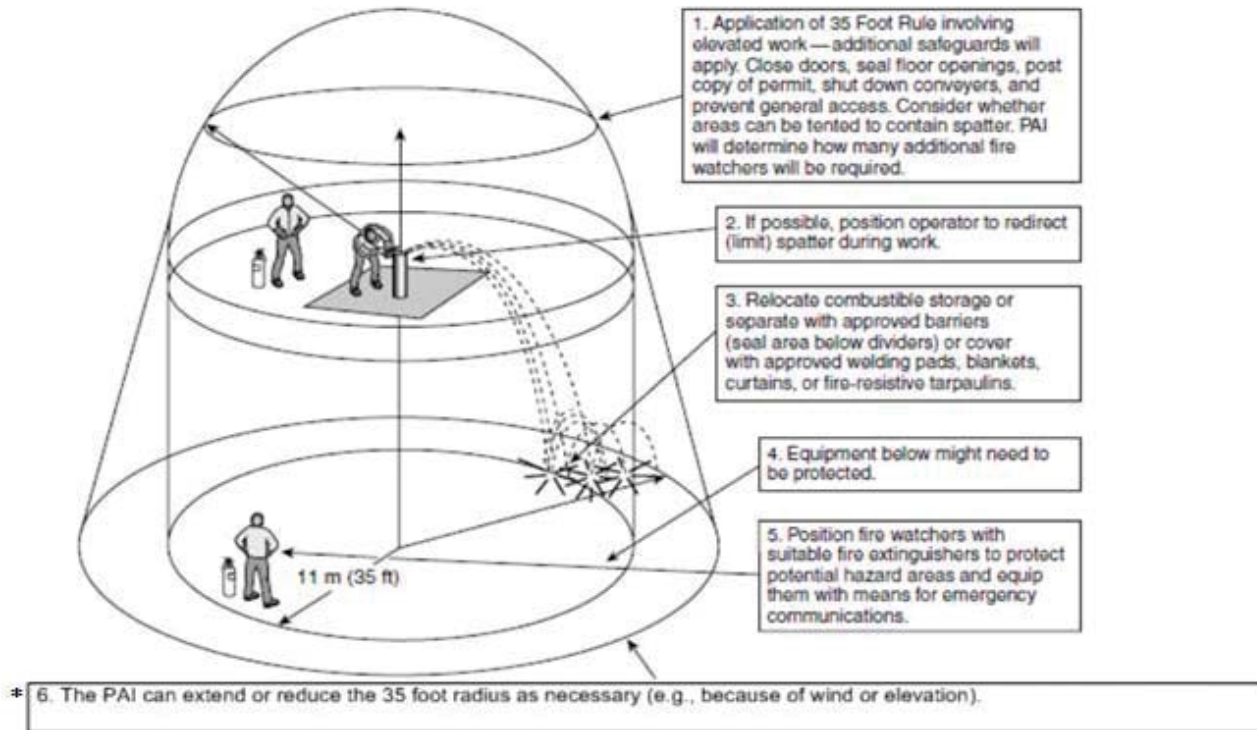
APPENDIX D Fire Watch Decision Tree



APPENDIX E Hot Work 35 ft Rule



35 Foot Rule Illustrated



Example of Where Multiple Fire Watches Are Needed

*The PAI is permitted to reduce the 35 foot boundary with permission from the FPE.